



Innovator 3 ARCHITECTURE

A NEW ENGLISH TUDOR COMES TO LIFE AS AN INSPIRED ORIGINAL

AS SEEN IN
CTC&G
Connecticut Cottages and Gardens

DOUGLAS VANDERHORN ARCHITECTS

DOUGLAS VANDERHORN'S CLIENTS

were interested in creating a house that could easily accommodate their large family while also fitting into their Olmsted-designed Greenwich neighborhood. "They were leaning away from English Tudor at first," VanderHorn explains. "It's much more challenging."

The architect convinced the clients his firm could pull off making an English Tudor that wasn't a copy, or a facsimile, or an homage-like pastiche of confusing aesthetic nods. "One of the best things is that most people see this house and think we have renovated an old house," VanderHorn says. As a firm, he and his collaborators have spent a significant amount of time studying the intricacies of old-style houses—"it takes studying the older floor plans and volumetric language of the style," he says of walking that fine line between uninspired copy and inspired original—and it shows. "We started it from scratch, but you educate yourself and then work in the vocabulary."

That vocabulary includes symmetry, a sense of formal entry and material touches like the traditional patterned plaster ceiling that brings eye-catching detail to the living room, a carved limestone fireplace, and quatrefoil patterns in the corners of the sleek-wood doors. The house is also, crucially, just one room deep, which allows for both clearer circulation and much greater access to light and the great outdoors.

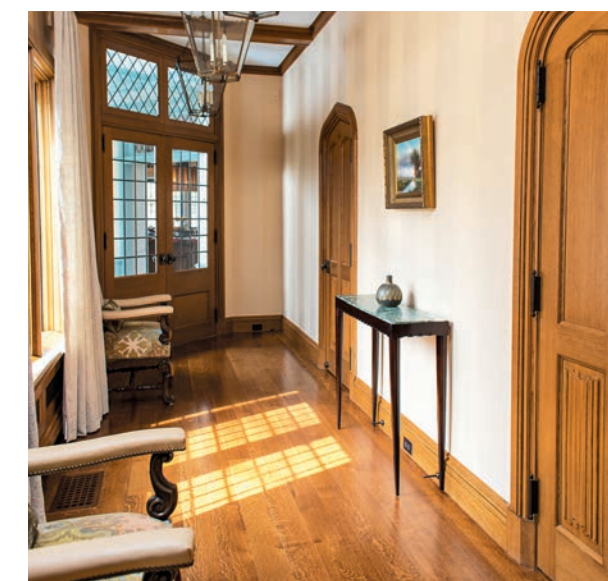
✦ To see more, visit cottagesgardens.com/2014ctcgidas

Detail Oriented A typically patterned Tudor plaster ceiling (OPPOSITE PAGE) brings detail into the majestic living room, while a pair of symmetrical and carefully carved doors lead into an old-school billiards room. Sofas are covered in a Cowtan & Tout fabric. Drapes are made of a Schumacher fabric. Pendants are from Marvin Alexander; sconces from Charles Edwards. See Resources.



Flawless Finish

From the outside (ABOVE), the house looks like it has been there forever, and its material combination of stone, wood and gray roof tile offer a sense of history. The front entrance (LEFT) cleverly conceals a set of benches tucked into the sides of the vestibule, while the tactility of the door contrasts with the strength of the custom-carved limestone arch. A long and light-filled hallway (BOTTOM LEFT) features drapes in a John Rosselli fabric, chairs from Harborview Antiques and lighting from Treillage. See Resources.





IDEA FILE

More Great Ideas *for your home, inside and out*



INTERIOR DESIGN

DYNAMIC LAYERING *PL Design*

It's all about the layers for this New Canaan home. Vibrant orange accents and varied patterns bring life and dynamism to an otherwise neutral palette. Photographs and personal touches make a refined atmosphere comfortable and fun for the entire family. *PL Design, LLC, New Canaan, 203-550-5371.*

KITCHEN



KEEP IT CLASSIC!

Douglas VanderHorn Architects

Leaded cabinets and windows nod to tradition in a Tudor revival home. Custom limestone flooring creates a sleek, clean look with functionality. *Douglas VanderHorn Architects, Greenwich, 203-622-7000, vanderhornarchitects.com.*



ARCHITECTURE

SOUTHERN EXPOSURE *Nautilus Architects*

An opening forges a relationship between a house and its spectacular views, fulfilling a young family's wish to interact with the outdoors. *Nautilus Architects, Old Lyme, 860-227-1169, nautilusarchitects.com.*

INTIMATE AFFAIR

Jennifer Anderson Design and Development

Sunken, walled gardens create intimate spaces within a flourishing landscape. Flowering perennials and fragrant shrubs surround a stone fountain, redefining the idea of a private garden. *Jennifer Anderson Design and Development, Wilton, 203-834-9666, jenniferanderson-designs.com.*

LANDSCAPE



BATH



ON REFLECTION

Mark P. Finlay Architects & Mark P. Finlay Interiors

Staying true to its existing 1930s architecture, this master bathroom blends classic elegance with updated design. The marble-slab shower and sink and mosaic-tiled floor pick up light, reflecting views of Long Island Sound to illuminate the space. *Mark P. Finlay Architects, AIA & Mark P. Finlay Interiors, LLC, Southport, 203-254-2388, markfinlay.com.*

PHOTOGRAPHS BY (CLOCKWISE FROM TOP LEFT) GEORGI DUTOV (PL), DOUGLAS VANDERHORN ARCHITECTS, JENNIFER ANDERSON DESIGN AND DEVELOPMENT, WARREN JAGGER (FINLAY)