

NEW AMERICAN LUXURY

EXCLUSIVELY FOR
THE LUXURY TRADE
PROFESSIONAL

DECEMBER 2012
VOLUME 2, NUMBER 4



CHANGING FACES

062

HER CLAIM TO FAME

Sofia Joelsson's
Hollywood dreams
turned into a

190

OSCAR- WORTHY

The new NYC
offices of Oscar de
la Renta by Meyer

218

BAKU FLAME TOWERS

HBA's inspired
interior work on
a new icon for an

Luxury-watch retailer
Westime opens a new West
Hollywood flagship store on
Sunset Boulevard



Tudor 2.0

WHEN THEY RAZED A HISTORIC ENGLISH TUDOR IN GREENWICH, CT, THE CREATIVE MINDS AT **HILTON-VANDERHORN ARCHITECTS** DIDN'T JUST REBUILD IT—THEY REVAMPED IT

WORDS
Matt Alderton

PHOTOGRAPHY
Nicholas Rotondi

DESIGN FIRM
Hilton-VanderHorn Architects
31 E. Elm St.
Greenwich, CT 06830
203 862 9011
hilton-vanderhorn.com

ENGLISH TUDOR HOMES ARE FAMOUS FOR THEIR elaborate stonework, distinctive timber framing, patterned brick, stately gables and precipitous pitched roofs. A tribute to the medieval cottages that crowded English hamlets during the 16th century—when the Tudor Dynasty reigned supreme—this style of home was all the rage in the roaring '20s, particularly in wealthy areas of Philadelphia, New York, and Washington, DC, where developers built entire neighborhoods of so-called "Stockbroker Tudors" for the country's new-moneyed upper class.

The Tudor style wasn't just popular in the Mid-Atlantic, however. It also meandered its way further north, into New England, where homes are still being built in the style today. Homes like the one Hilton-VanderHorn Architects was hired to build for a family in Greenwich, Connecticut, where the firm is based.

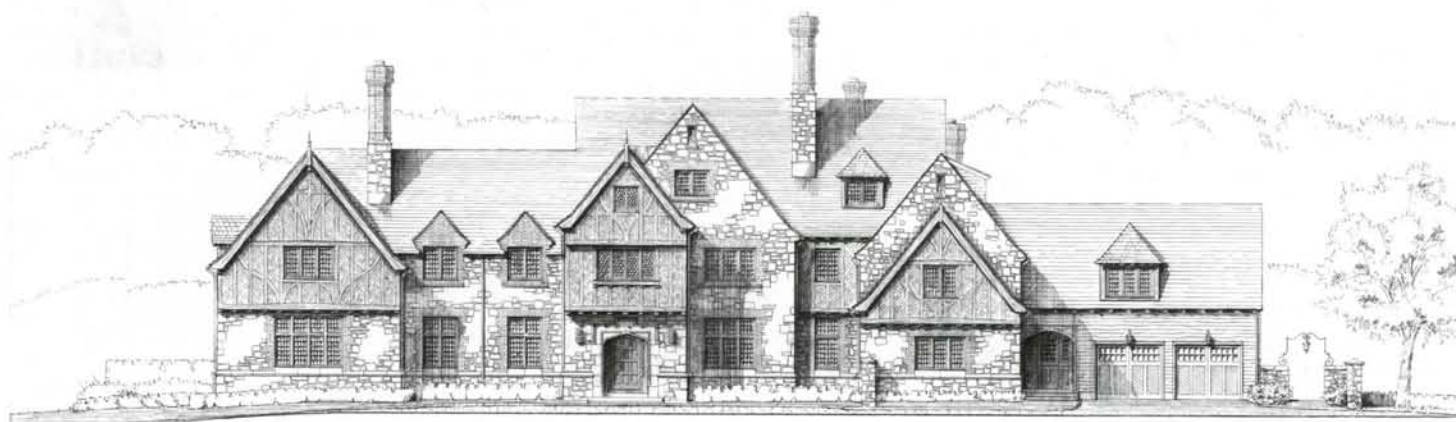
"The home is in a historic 1920s neighborhood that was originally laid out by the firm of Frederick Law Olmsted—a very famous landscape designer who designed Central Park," explains founding partner Douglas VanderHorn. "The neighborhood is filled with English-style homes from the 1920s, and this property in particular had an existing 1920s English Tudor-style house on it."

Unfortunately, that home was in ill repair, and far too small for the client's family. Instead of renovating it, it was decided that Hilton-VanderHorn—which specializes in historically based residential design—would build a new "old" home.

To create a home that looked old (in style) but felt new, Hilton-VanderHorn combined elements of traditional Tudor architecture with features from the family's contemporary wish list. Traditional elements, for instance, include



REINCARNATING THE TUDOR
 Inspired by the 1920s "Stockbroker Tudor," Hilton-Vanderhorn designed this 11,000-square-foot home with great attention to detail, from the appropriate massing down to the brick infill between the solid-oak half timbers. "A lot of people look at this house and have no idea it's a new home," VanderHorn says. "They think it's an old house that's been restored, and that's the best compliment we can get."





01

01 POINTS OF INTEREST

The reproduction gothic mantel and intricate ribbed ceiling pattern steal the show in the home's living area. Like most principal rooms in the house, natural light and ventilation pours through generous leaded casement windows on parallel sides. An intimate window bay completes the space.

02 RECLAIMED-WOOD CELLAR

Adjacent to the basement's sitting room is the wine cellar, constructed of reclaimed barn wood. Under the diagonal shelving is a built-in humidor for the owner's cigar collection.

authentic carved-limestone fireplaces, real oak timbers, octagonal chimney flues, a graduated slate roof, hipped dormers, gothic arches, carved oak balusters, plaster tracery ceilings, antique-style windows with leaded glass dividers, and carved quatrefoil embellishments. And, of course, rustic exterior stonework, which was installed by Luppino Landscaping & Masonry of Pound Ridge, New York. "This is the finest stonework we've seen on one of our projects," VanderHorn says. "Every stone is pillowed, as they call it, meaning it's given that rustic sort of face, which projects forward and makes the stonework look authentic, like a true load-bearing stone wall—and a lot of it is not. It absolutely is convincing."

Luppino was in good company: the house runs over with fine detailing that acts as an autograph, signed by local New England craftsmen. "All of the people who worked on the house are local craftsmen who have that Yankee ingenuity," VanderHorn says. "A close look at any part of the house will display the skills of the kind of craftsmen that we have in New England—craftsmen not found in many other places.

New England really has maintained a good group of talented craftsmen, in part because there's enough wealth here—enough people who appreciate this level of craftsmanship—to support it."

Although impeccable craftsmanship is evident, form did not interfere with function, according to VanderHorn, who says the family's contemporary lifestyle figured prominently in the home's design. For instance, the house has eight bedrooms to accommodate several children and staff, as well as a four-car garage, not to mention its "smart house" controls.

Additionally, recreation figures prominently. "This is a young family. They wanted lots of recreation space because they have kids, and New England winters aren't always the best," VanderHorn says. "So, the interior of the house contains a large rec room and gymnasium on the lower level, a small basketball court on the third floor, and a theater."

The floor plan is equally cognizant of the family's four children. "The floor plan is more traditional in the formal areas of the house—the entry hall, the living room, the dining

LOCATION
Greenwich, CT

DESIGN/CONSTRUCTION
2008-2011

SIZE
12,000 sq. ft.

GENERAL CONTRACTOR
Cornerstone Contracting Corp.
cornerstone-builders.com

MASONRY
Luppino Landscaping &
Masonry
luppinolandscape.com

FRAMING/EXTERIOR TRIM
MG Flynn
mgflynncontracting.com

LANDSCAPE DESIGN
Cummin Associates
cumminassociates.com

TIMBERWORK
Dreaming Creek Timber Frame
Homes
dreamingcreek.com

SLATE ROOF
Landmark Exteriors
landmarkexteriors.com

WINDOWS
Dynamic Architectural
Windows & Doors
dynamicwindows.com



DOUGLAS VANDERHORN

*All of the people who worked on the house are
local craftsmen who have that Yankee ingenuity
... craftsmen not found in many other places.*



Proud associate of
Hilton-Vanderhorn
Architect

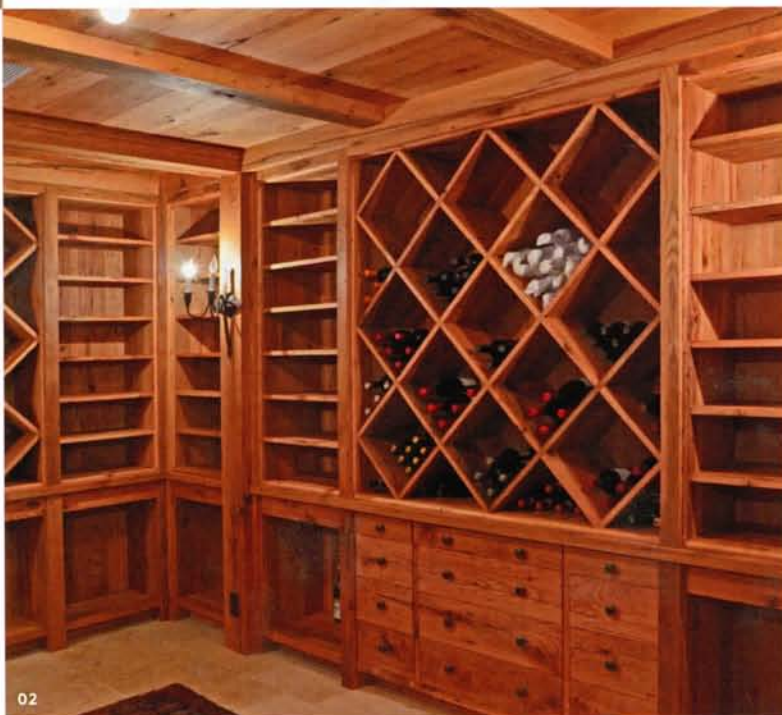
**CUSTOM MASONRY
& LANDSCAPING**

LUPPINO
LANDSCAPING & MASONRY

Since 1974

(914) 666-7028

77 Sheather Road • Mount Kisco, NY 10549





M.G. Flynn, Inc. provides the finest craftsmen for the most beautiful homes in the area. The company was founded in 1985 through hard work and perseverance with the ultimate goal to deliver the highest quality homes to its clientele.

Committed to the principles of quality, integrity and fairness in all areas of Framing, Interior and Exterior Trim, Window and Exterior Door installation, Hardware installation, Cabinetry installation, and a large range of Specialty Millwork installation.

M.G. Flynn, Inc.

PO Box 146 | Easton, CT. 06612

P: 203.255.0190

F: 203.292.5013

info@mgflynncontracting.com

mgflynncontracting.com



FAMILY ROOM

The home's family room features a solid-timber open roof, created by M.G. Flynn, and a surprise element: the wood-and-limestone mantel also contains a hidden television above the fireplace.

room—but the spaces where the family spends most of its time are laid out in a more contemporary fashion," says VanderHorn, referring to the integrated kitchen, family room, and breakfast room. "With four young children you want to provide a lot of yard space, and from the kitchen, breakfast area and family room you can look out to the fantastic yard and keep an eye on them."

When the firm began designing the home in 2008, it set out to build a house that would fit into the neighborhood as if it were one of the original 1920s English Tudor houses. When the home was completed in 2011, it was obvious that Hilton-VanderHorn had succeeded. "A lot of people look at this house and have no idea it's a new home," VanderHorn says. "They think it's an old house that's been restored, and that's the best compliment we can get." ●

A MESSAGE FROM VILLA LAGOON TILE

Villa Lagoon Tile (VLT) is an import/export floor-covering firm that specializes in traditional encaustic cement tiles. Recognized by their vibrant colors and distinct designs, Villa Lagoon's cement tiles are handcrafted using natural-earth pigments and accepted as a green building material. Established in 2008, VLT offers designers and architects the ability to fully customize floors and walls to fit any décor or setting: commercial buildings, restaurants, public spaces, or residences. Experience the refined elegance of floors that make a statement. villalagoontile.com